

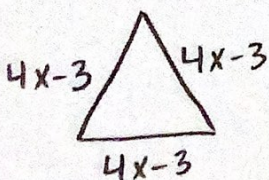
MULTI-STEP EQUATIONS WITH THE DISTRIBUTIVE PROPERTY

Solve each equation by distributing. Draw a line from each equation to the expanded form and the solution.

EQUATION	EXPANDED	SOLUTION
1. $3(1.5x + 9) = ?$	$4.5x + 16 = 11.5$	$x = -4$
2. $-9(\frac{1}{2}x - 3) = ?$	$4.5x + 27 = -9$	$x = 6$
3. $2(2.25x + 8) = ?$	$4.5x - 16 = 11$	$x = -8$
4. $8.5x - 2(2x + 8) = ?$	$-4.5x + 27 = 45$	$x = -1$

Answer the following questions.

5. The perimeter of an equilateral triangle is 63 inches. If the length of each side is $(4x - 3)$, find the value of x .



Equation: _____

Solution: _____

6. The Gonzales family has three children. On summer break, they went to an amusement park. They bought 3 child tickets for \$18.50 and 2 adult tickets. If they spent a total of \$104.50, how much was the price of each adult ticket?

Equation: _____

Solution: _____