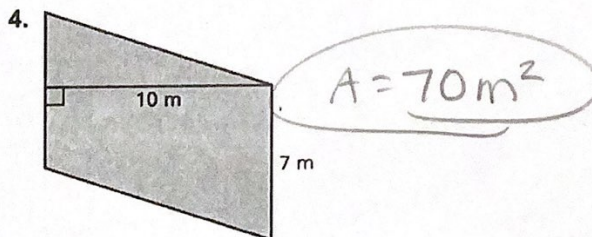
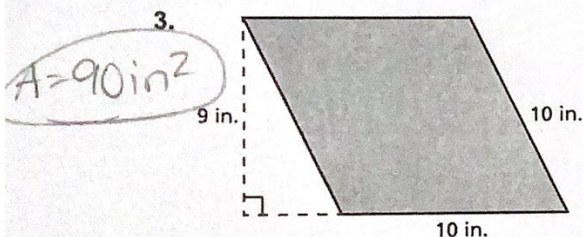
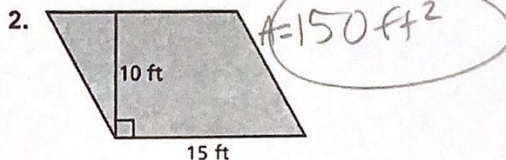
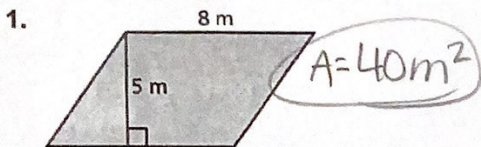


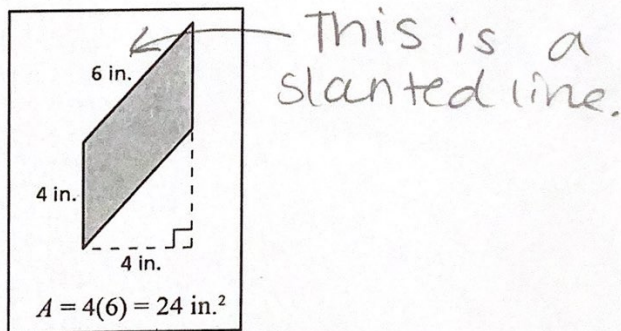
Lesson 8.1 Extra Practice

Find the area of the parallelogram.

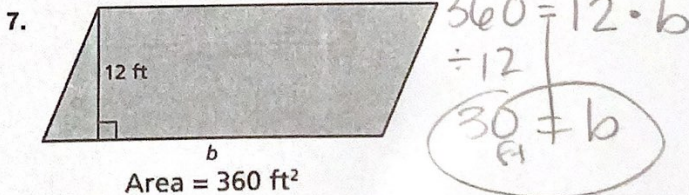
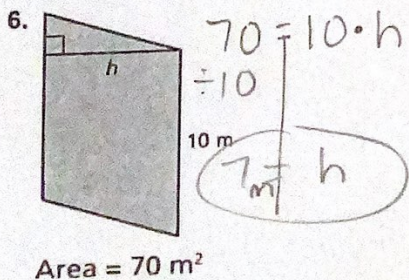


5. Your friend finds the area of the parallelogram. Is your friend correct? Explain your reasoning.

Need to do $4 \cdot 4 = 16 \text{ in}^2$



Find the missing dimension of the parallelogram.



8. The area of a parallelogram-shaped carpet is 216 square feet. The carpet has a base of 18 feet. What is the height of the carpet?

$216 = 18 \cdot h$
 $\div 18$
 $12 \text{ ft} = h$